

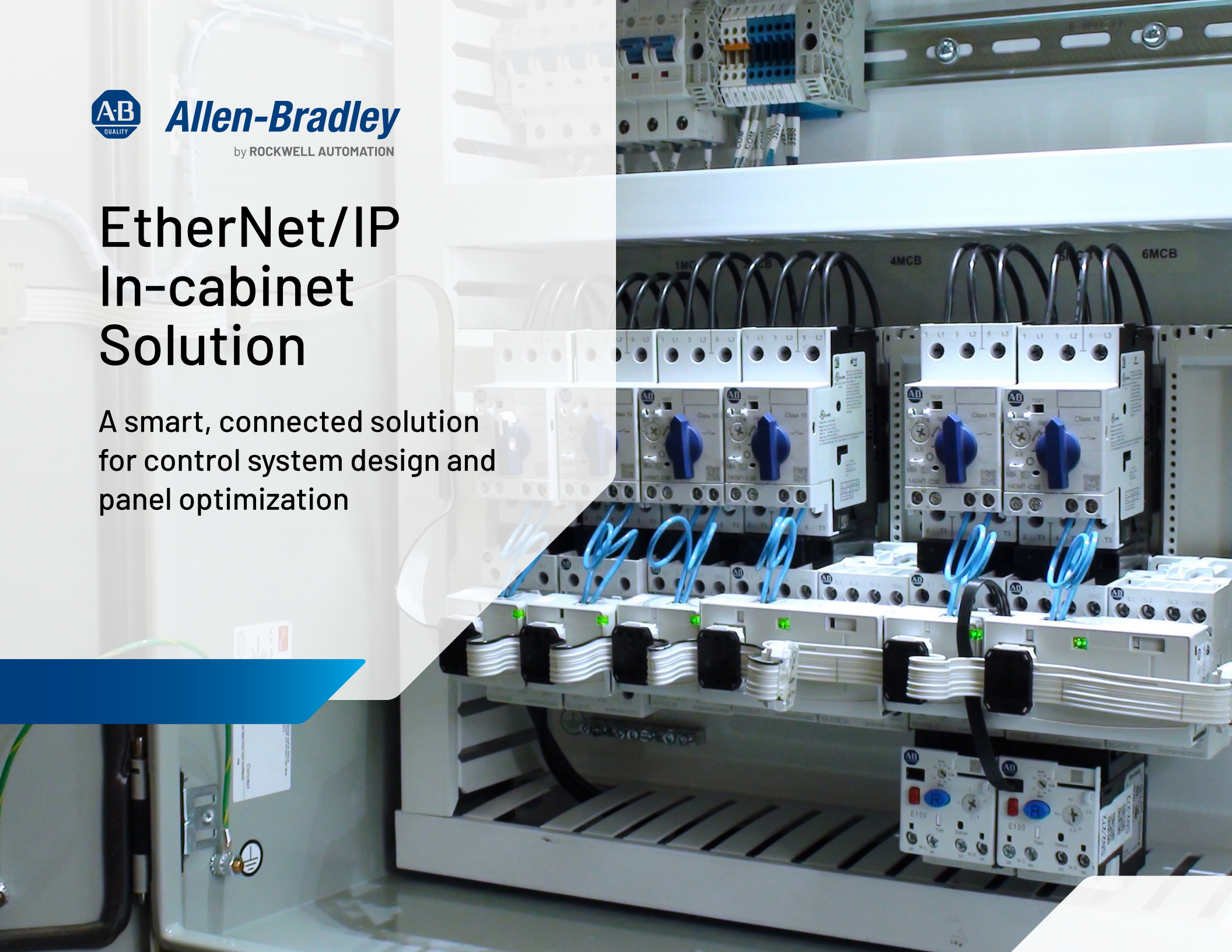


**Allen-Bradley**

by ROCKWELL AUTOMATION

# EtherNet/IP In-cabinet Solution

A smart, connected solution  
for control system design and  
panel optimization

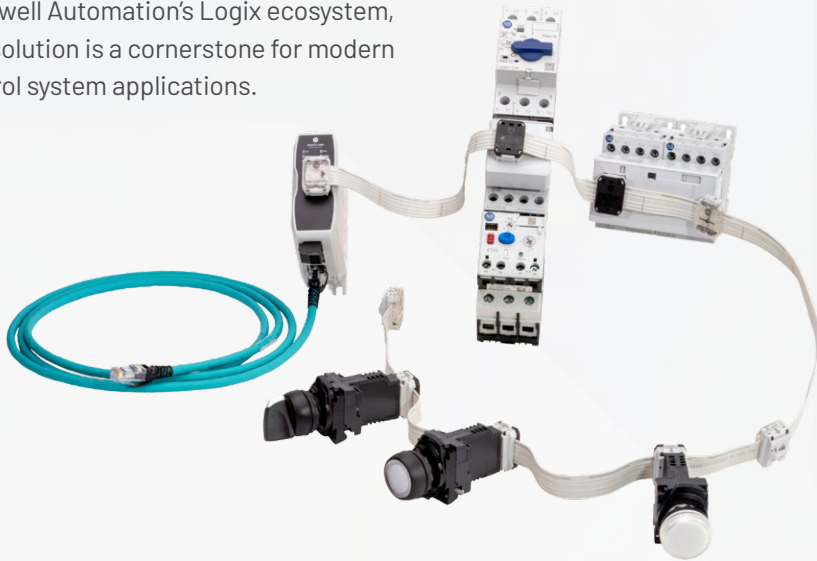




# EtherNet/IP In-cabinet Solution – extend your infrastructure

In an increasingly connected manufacturing world, reducing complexity without sacrificing control is a constant challenge. As industrial environments shift toward smart manufacturing, system integrators and OEMs are seeking compact, reliable, and easily configurable solutions to meet demands for efficiency, communication, scalability, and sustainability.

The EtherNet/IP™ In-cabinet Solution is designed to address these needs streamlining wiring, saving panel space, and making setup a breeze. Backed by global Ethernet standards and seamless integration with Rockwell Automation's Logix ecosystem, this solution is a cornerstone for modern control system applications.



## Integrate with IT and OT Systems

Ethernet capability allows for easy integration between your IT (Information Technology) and OT (Operational Technology) systems. This technology reduces the gap between the factory floor and higher-level business systems, enabling data transparency, system agility, and lower total cost of ownership.

## Reduce Wiring and Setup Time

Minimize labor hours and wiring complexity. The EtherNet/IP In-cabinet Solution allows you to replace traditional point-to-point wiring with network-based connections, decreasing time and resources for wiring and setup. This system also simplifies installation and maintenance while reducing the potential for wiring errors or damage.

## Reduce Panel Size

With modular designs and compact components, this solution allows you to downsize control panels. That means more room for value-added features—or smaller enclosures that reduce material and installation costs.

## Simplify Network Configuration

Integrated diagnostics and configuration via Studio 5000 Logix Designer® enables rapid deployment and intuitive control system setup.

## Improve Sustainability

Fewer cables, smaller panels, and optimized power usage contribute to a more sustainable footprint. Reduced materials and energy efficiency go hand in hand with environment, social and governance initiatives.

# How far can EtherNet/IP go?

**The EtherNet/IP In-cabinet Solution is a powerful, ODVA-certified network system that leverages EtherNet/IP™ (Ethernet Industrial Protocol), a widely adopted standard for real-time industrial automation applications that enable devices like sensors, push buttons, motor controllers, PLCs (Programmable Logic Controllers), and HMIs (Human Machine Interfaces) to communicate over a common Ethernet network within your cabinet control.**

With this open network functionality, the EtherNet/IP In-cabinet Solution allows for:

- Network communication between traditionally hard wired components
- Scalable panel configuration
- Real-time diagnostics and preventative maintenance



## The role of ODVA in driving interoperability

The Open DeviceNet Vendors Association (ODVA) plays a critical role in maintaining EtherNet/IP's interoperability across industrial devices. As a global standards organization, ODVA defines conformance requirements and helps maintain compliance among vendors—helping to achieve plug and play capability between compliant components.

With ODVA-certified devices, manufacturers can build modular, scalable systems that operate harmoniously—creating a truly open ecosystem.

**The EtherNet/IP In-cabinet Solution is an ODVA approved product.**

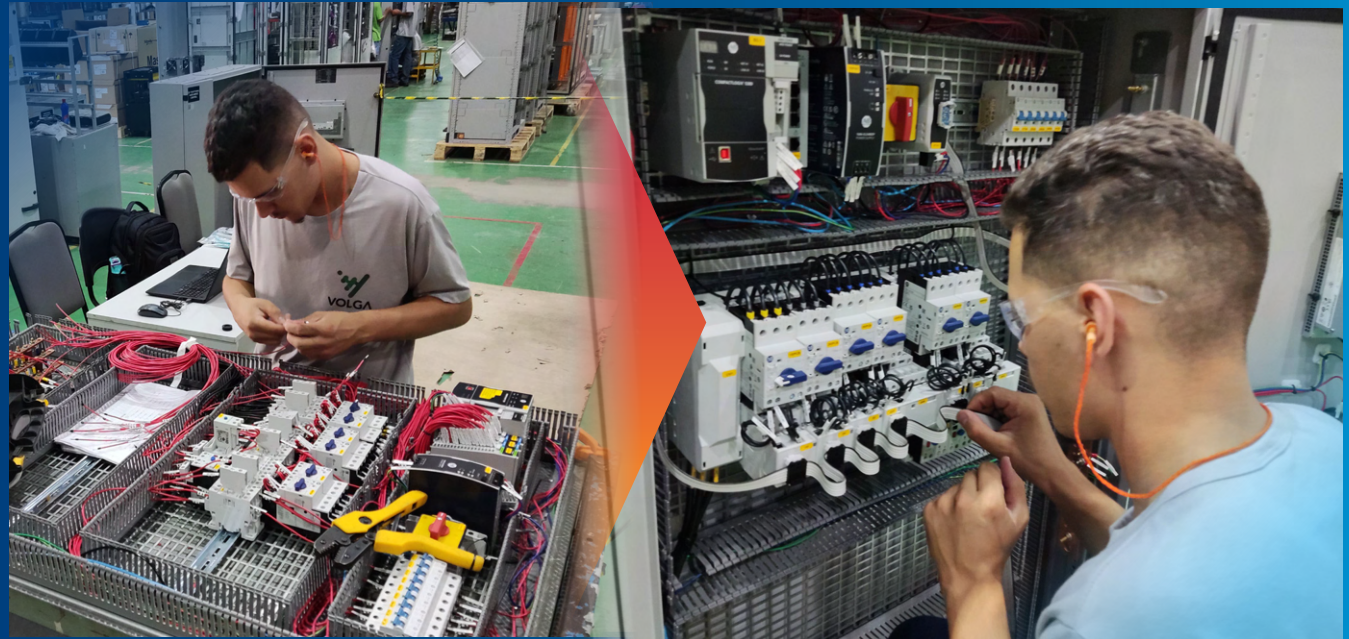
# Simplify control cabinet design and deployment

Traditional control panel designs can be burdened with complex point-to-point wiring, space-consuming wiring, configuration time, and difficulties with scalability and troubleshooting. The EtherNet/IP In-cabinet Solution addresses these challenges by promoting networked I/O connections for compatible hardware and reducing the need for extensive wiring.

EXPERIENCE  
UP TO AN

**80%**

**reduction in  
wiring time**



**Traditional hardwired panel**  
Over 20 hours to wire

**EtherNet/IP In-cabinet Solution**  
Less than one hour to wire



# Bring your smallest components into the rest of your connected operations

The EtherNet/IP In-cabinet Solution is a system using up to 25 meters (82 feet) of connectivity with a multi-drop topology allowing you to connect up to 40 devices quickly and reliably. This is a true plug and play system that incorporates both network and switched power, Single-pair Ethernet (SPE), and device positioning in one cable.

## The EtherNet/IP In-cabinet Solution includes:

1486 flat media cable and connectors



1834-AENTR Ethernet/IP gateway



100-E and 104-E communication interface connectors



800F-INT



## Compatible components:

E100 Electronic overload relay



100-E IEC Contactor



140MT Motor Protection Circuit Breaker



800F 22 mm Round Operator



Discover how the EtherNet/IP In-cabinet Solution integrates with the Branch Motor Control & Protection portfolio: [rok.auto/branchmotor](http://rok.auto/branchmotor)

# Connect to a unified software suite

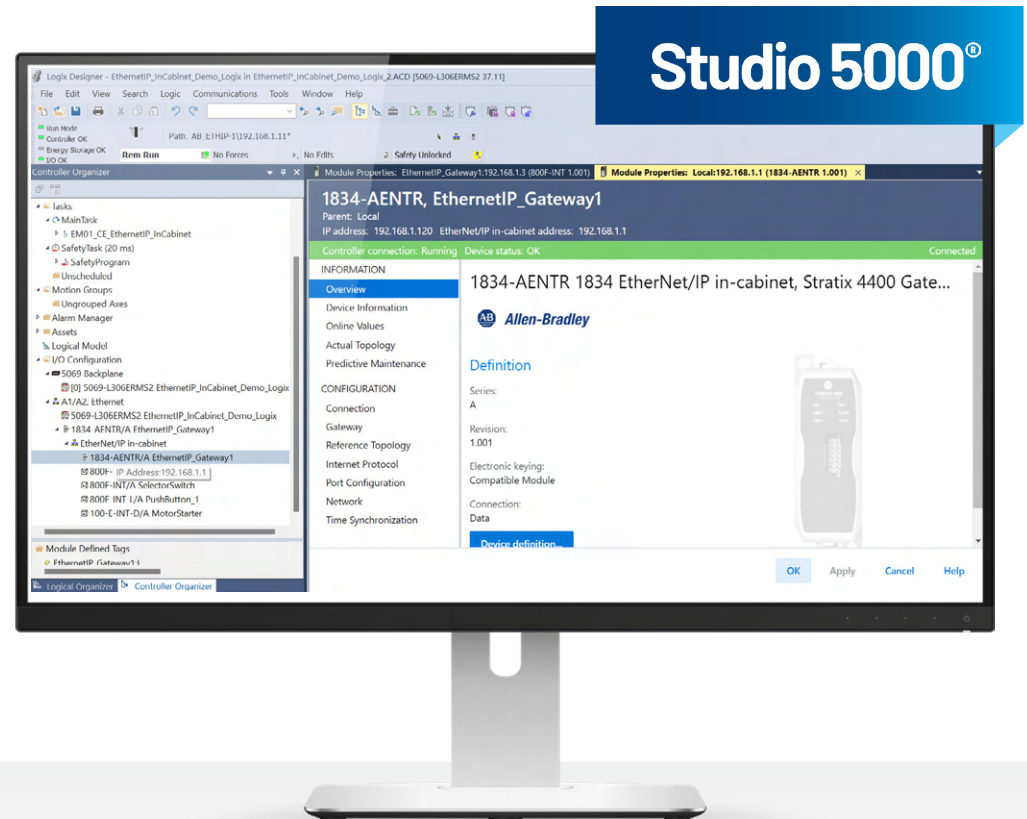
EtherNet/IP enables centralized monitoring and control of your industrial processes. Operators can access real-time data from anywhere within the network, improving response times and the ability to troubleshoot and diagnose issues remotely.

The EtherNet/IP In-cabinet Solution capitalizes on this functionality by integrating seamlessly with Rockwell Automation's Studio 5000® environment, enabling users to:

- Configure and tag devices from a unified environment
- Access device-level diagnostics and asset information
- Take advantage of peer-to-peer functionality to reduce logical programming complexity
- Enable scalable architectures with centralized control

Through the Logix Designer application, users experience a cohesive development environment that minimizes engineering time and maximizes control consistency.

Learn more about Studio 5000:  
**[rok.auto/studio-5000-logix-designer](http://rok.auto/studio-5000-logix-designer)**



# Design for a more sustainable future

The EtherNet/IP In-cabinet Solution lessens waste and minimizes panel footprint by reducing the need for point-to-point wiring often found in traditional panel designs. By using this innovative single flat media cable, you can significantly limit material usage and waste including wiring, copper and plastic.

This system supports scalable, distributed architectures, enabling more precise customization without overbuilding. Integrated diagnostics further enhance efficiency by allowing for quick troubleshooting, minimizing unnecessary component replacements and downtime. Overall, the EtherNet/IP In-cabinet Solution promotes a leaner, cleaner, and more sustainable approach to industrial panel design.

**For some of our customers, the first point for them is sustainability. We'll be talking with our customers about this technology that reduces cabling and copper and reduces the impact on the environment."**

CARLOS LEOPOLDO,  
Commercial Director, Volga







# Ready to simplify your control cabinet?

The EtherNet/IP In-cabinet Solution is a powerful, future-ready networking system that can elevate your industrial operations. It is more than just a product—it's a smarter way to build control systems. With benefits including improved system efficiency, space savings, sustainability, and digital integration, it's the ideal choice for manufacturers seeking to modernize their operations.

Learn more about the EtherNet/IP In-cabinet Solution: [rok.auto/ethernetip-in-cabinet-solution](https://rok.auto/ethernetip-in-cabinet-solution)





Connect with us.    

**rockwellautomation.com** — expanding **human possibility**<sup>®</sup>

AMERICAS: Rockwell Automation, 1201 South Second Street, Milwaukee, WI 53204-2496 USA, Tel: (1) 414.382.2000

EUROPE/MIDDLE EAST/AFRICA: Rockwell Automation NV, Pegasus Park, De Kleetlaan 12a, 1831 Diegem, Belgium, Tel: (32) 2663 0600

ASIA PACIFIC: Rockwell Automation SEA Pte Ltd, 2 Corporation Road, #04-05, Main Lobby, Corporation Place, Singapore 618494, Tel: (65) 6510 6608

UNITED KINGDOM: Rockwell Automation Ltd., Pitfield, Kiln Farm, Milton Keynes, MK11 3DR, United Kingdom, Tel: (44)(1908) 838-800

EtherNet/IP, expanding human possibility, Studio 5000 and Studio 5000 Logix Designer are trademarks of Rockwell Automation, Inc.

Trademarks not belonging to Rockwell Automation are property of their respective companies.

Publication 1834-SP001A-EN-P May 2025

Copyright © 2025 Rockwell Automation, Inc. All Rights Reserved. Printed in USA.